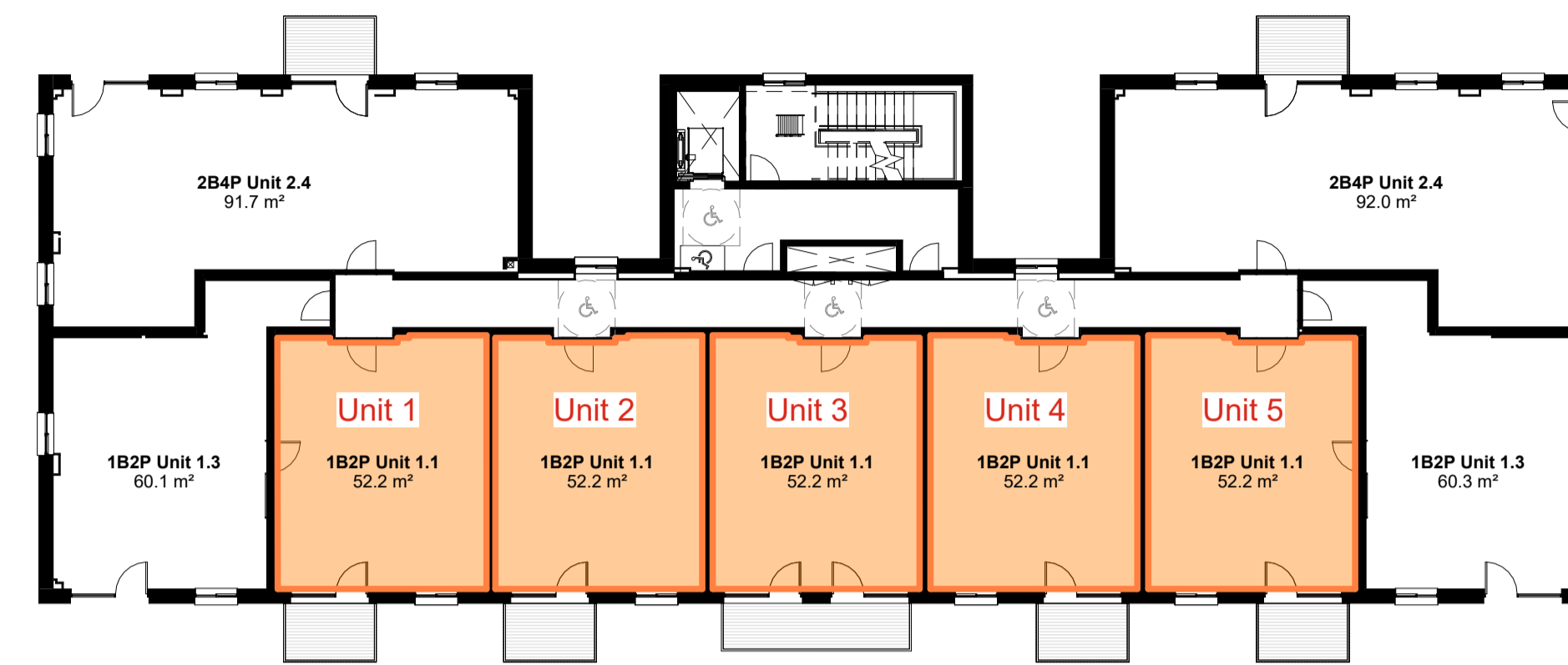
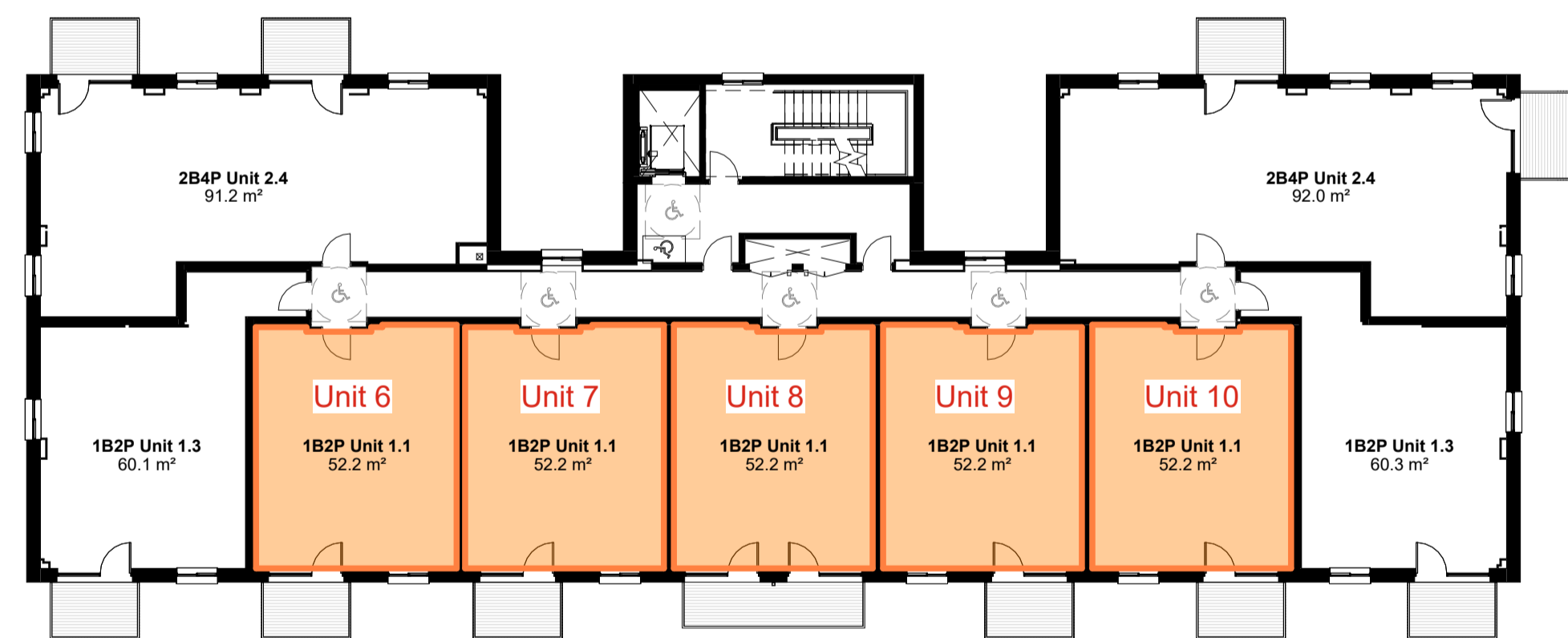


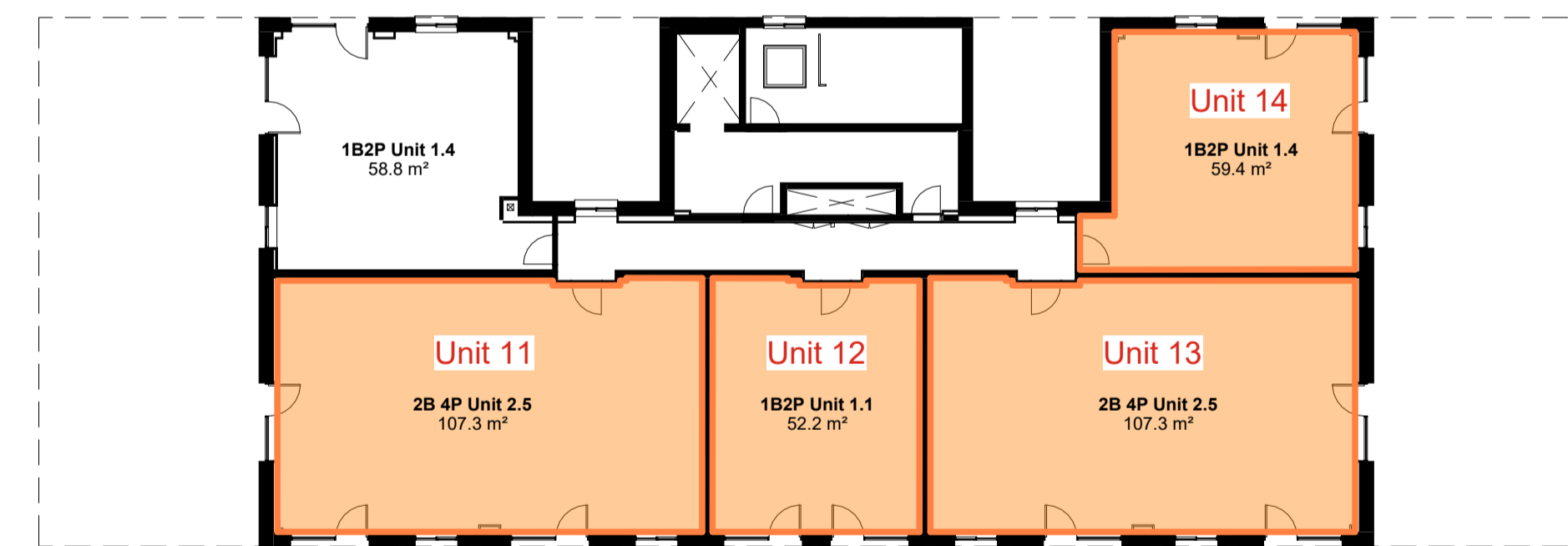
2 Part V - Plot A L00  
1:200



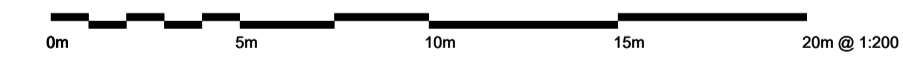
4 Part V - Plot A L02  
1:200



3 Part V - Plot A L01  
1:200



5 Part V - Plot A L03  
1:200



Notes & Key: HWS Ref: 2481

Dimensions are not to be scaled from on this document. Notify Howells of discrepancies affecting the information shown. This drawing is copyright of Howells, the trading name of Glenn Howells Architects Limited.

The redline boundary shown is based upon OS information and is therefore indicative. Its precise location and relationship to Land Registry, land title and or land ownership information is subject to confirmation from the client, and or landowner. Howells take no responsibility for the precise location of legal boundaries indicated on this drawing and advise that a separate drawing is created by a specialist survey in order to establish such ownership and or legal boundaries.

Application Boundary Line

**Total Part V Allocation**

<b>Total</b>	14
1B2P	2
2B4P	12
	16 Homes

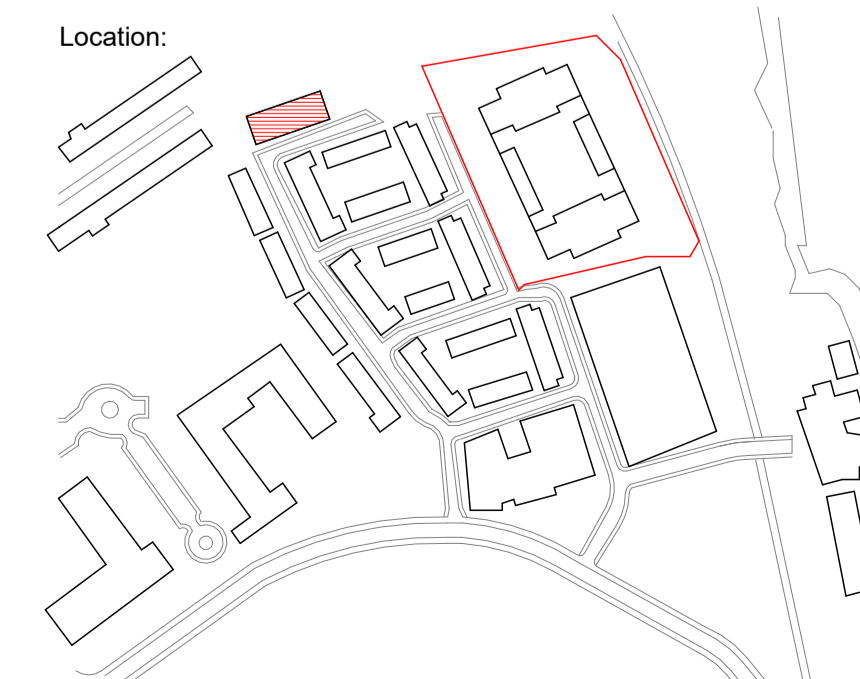
Proposed Part V Homes

**Block D Part V - Schedule**

Ground Floor	
1B2P	0
2B4P	0
First Floor	
1B2P	5
2B4P	0
Second Floor	
1B2P	5
2B4P	0
Third Floor	
1B2P	2
2B4P	2

**Block A Part V - Schedule**

Ground Floor	
1B2P	2
2B4P	0



Status:  
**FOR PLANNING**

Revision History:  
P01 Issued for Planning

Checked: SJ  
07/07/2025 HWS

Project & Client:  
Sea Gardens Phase 1 Block A  
working with Shankill Property Investments Ltd  
File Title: Proposed Part V Block D  
Scale: 1:200 @A1

File ID: BRA-HWS-BA-ZZ-D-A-10106  
Revision: P01

**Howells**

NOTE: Consented Block. Application Reference Number:ABP-311181-21